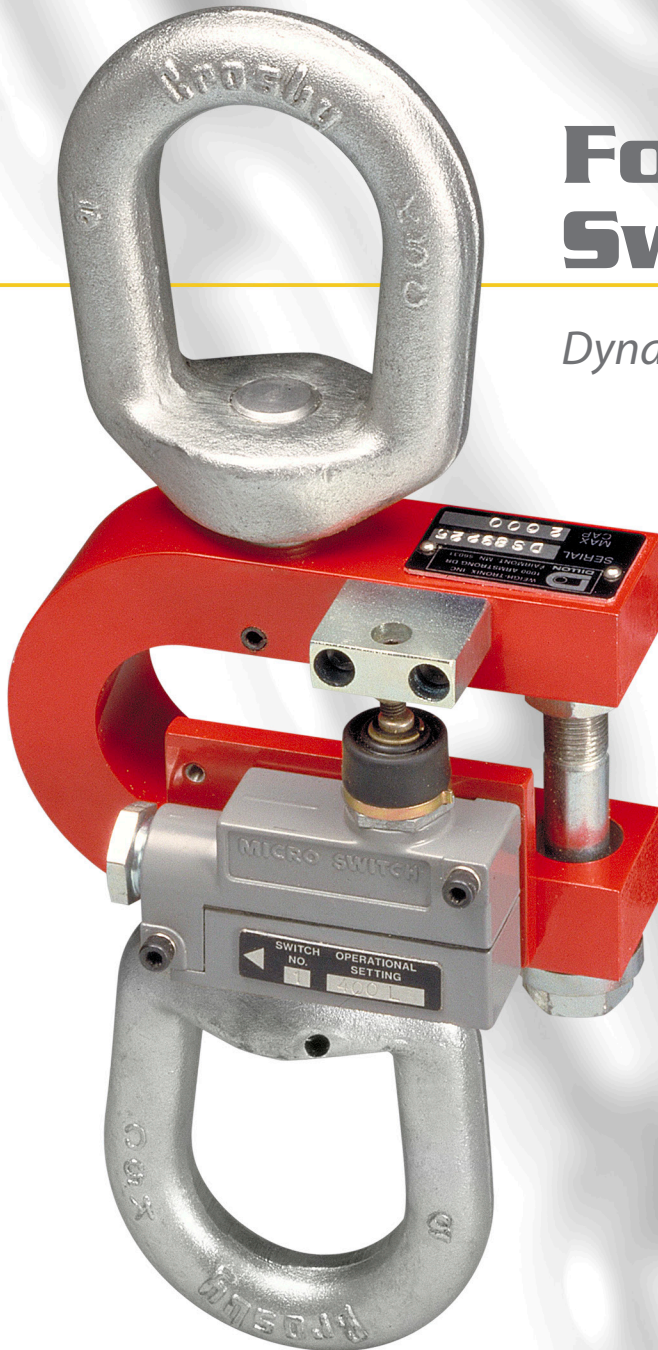


Force Control Switches

DynaSwitch®



Simple and ultra-reliable passive sensors provide switch contacts that open or close at specified loads.

- Overload protection
- Slack-line detection
- Up to four switches on a single device

DILLON
Force Measurement Equipment

DynaSwitch®

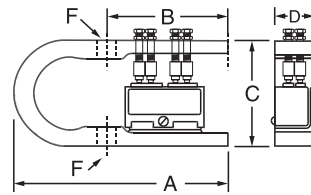
For cable ends and supported loads

Dillon DynaSwitch systems are a reliable, low cost way to control forces and prevent overloads. They can be used in automation controls, acting as scales. They can be used on cranes, hoists and elevators-not only to shut off power when an overload condition exists, but they can also be set to operate lights, buzzers or klaxons to warn of an impending overload. Like 24-hour sentinels, they can operate in normal or extreme environments.

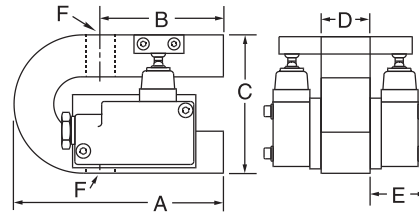


The heart of the system is a force beam which operates in tension or compression. Seven different load capacities are available. Switch and physical connection options are listed. Each beam can accommodate from one to four switches which can be set to operate as many as four different switching functions or combinations including slackline detection.

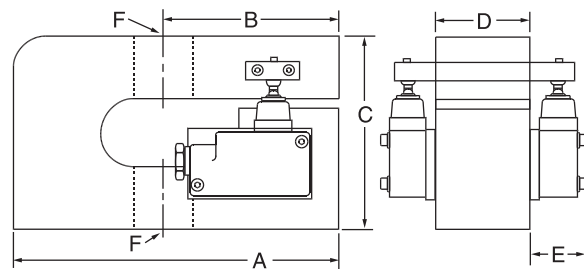
All DynaSwitch force beams and attachment fittings have an ultimate safety factor of 5:1 (4.5:1 for metric capacities). In addition, all models have an overload stop or bolt to provide extra protection to the measuring ability of the DynaSwitch force beam. Dillon will set the switches to trigger at the loads you desire, if specified at time of order.



100 lb, 1000 lb and 5000 lb capacity force beam. Illustrated with four low differential switches.



2000 lb and 10,000 lb capacity force beam. Illustrated with two weatherproof switches (option 2B).



25,000 lb and 50,000 lb capacity force beam. Illustrated above two weatherproof switches (option 2B).

SPECIFICATIONS

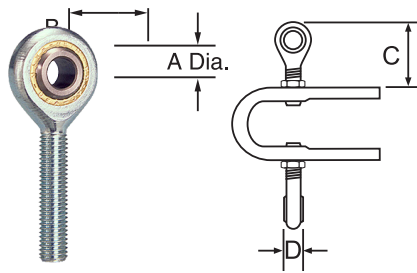
	DSW-2	DSW-3	DSW-4	DSW-5	DSW-6	DSW-7
Capacity lb (kg)	1000 (450)	2000 (900)	5000 (2270)	10,000 (5000)	25,000 (11400)	50,000 (22700)
Min Setpoint* lb (kg)	100 (45)	200 (90)	500 (227)	1000 (45)	1250 (1140)	2500 (2270)
Repeatability lb (kg)	±30 (±15)	±60 (±30)	±150 (±75)	±300 (±150)	±750 (±375)	±1,500 (±750)
Hardware options	D,E,G,S	E,F,G,S	E,G,S	E,F,G,S	E,G,S	E,G
Switch options	A,J	B,C	A,J	B,C	B,C	B,C

DIMENSIONS

	DSW-2	DSW-3	DSW-4	DSW-5	DSW-6	DSW-7
A in (cm)	5.12 (13.0)	6.00 (15.2)	5.50 (14.0)	6.00 (15.2)	8.25 (21.0)	9.31 (23.7)
B in (cm)	2.94 (7.5)	3.50 (8.9)	3.00 (7.6)	3.50 (8.9)	5.00 (12.7)	5.00 (12.7)
C in (cm)	2.48 (6.3)	3.96 (10.1)	2.98 (7.6)	3.96 (10.1)	4.69 (11.9)	5.50 (14.0)
D in (cm)	0.98 (2.5)	1.47 (3.7)	0.98 (2.5)	1.44 (3.7)	2.38 (6.1)	2.68 (6.8)
E in (cm) Option B	n/a	1.59 (4.0)	n/a	1.59 (4.0)	1.59 (4.0)	1.59 (4.0)
E in (cm) Option C	n/a	2.48 (6.3)	n/a	2.48 (6.3)	2.48 (6.3)	2.48 (6.3)
F (thread)	½ - 20 UNF	7/8 - 14 UNF	½ - 20 UNF	7/8 - 14 UNF	1¼ - 12 UNF	1¾ - 12 UNF

*Multiply by 3 for Option C.

DynaSwitch Hardware Options



Dimensions Inches (cm)

Model	A	B	C	D
DSW-2	0.50 (1.27)	1.32 (3.4)	1.88 (4.8)	0.63 (1.6)

D ROD END CONNECTORS FOR TENSION RIGGING

FITS DSW-2

Self-aligning, rod end connectors are normally mounted at right angles to each other providing universal alignment under load. They can be mounted parallel to the force beam on request.



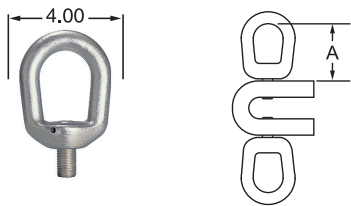
Dimensions Inches (cm)

Model	A
DSW-2, DSW-4	0.45 (1.1)
DSW-3, DSW-5	0.61 (1.6)
DSW-6, DSW-7	0.83 (2.1)

E HARDENED BALL AND CUP FOR COMPRESSION USE

FITS ALL

Heat-treated alloy steel. Cup is highly polished and plated. Ball is held in place by spring clip held by shoulder of cup. Slightly different configuration for high range switches.



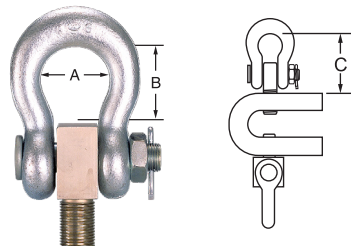
Dimensions Inches (cm)

Model and Switch	A
DSW-3	Switch B 4.34 (11.0)
	Switch C 5.24 (13.3)
DSW-5	Switch B 4.34 (11.0)
	Switch C 5.06 (12.9)

F LIFTING EYE FOR TENSION USE

FITS DSW-3, DSW-5

Hardened steel eye threads into force beam. Oriented parallel to force beam unless otherwise specified. Orientation fixed by roll pin.



Dimensions Inches (cm)

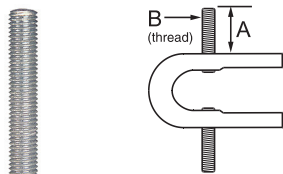
Model	DSW-2	DSW-3	DSW-4	DSW-5	DSW-6	DSW-7
A	1.69 (4.3)	1.69 (4.3)	1.69 (4.3)	1.69 (4.3)	3.25 (8.2)	5.00 (12.7)
B	1.94 (4.9)	1.94 (4.9)	1.94 (4.9)	1.94 (4.9)	4.06 (10.3)	6.12 (15.5)
C	4.19 (10.6)	4.13* (10.5)	4.19 (10.6)	4.13† (10.5)	7.12‡ (18.1)	10.36 (26.3)

* Option C switch is 4.76 inch (12.1 cm)
† Option C switch is 5.06 inch (12.85 cm)
‡ Option C switch is 8.38 inch (21.3 cm)

G ADAPTER, SHACKLE AND PIN

FITS

A hardened, forged steel shackle with adapter and pin for tension rigging of DynaSwitches. Shackles and similar fittings are installed at time of manufacture with the plane of the top fitting lifting opening parallel to the beam length, and at 90° to the position of bottom fitting. Orientation fixed by roll pin.



Dimensions Inches (cm)

Model	DSW-2	DSW-3	DSW-4	DSW-5	DSW-6
A	1.88 (4.8)	2.19 (5.6)	2.31 (5.9)	2.19* (5.6)	2.31 (5.9)
B (thread)	1/2-20	7/8-14	1/2-20	7/8-14	1 1/4-12

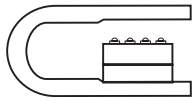
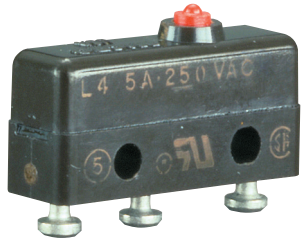
* Option C switch is 2.00 inch (5.1 cm)

S THREADED STUD

FITS All except DSW-7

For applications where conventional shackle or attachment eye cannot be used. Will accommodate yokes and other special fixtures. Heat treated alloy steel, secured by a roll pin.

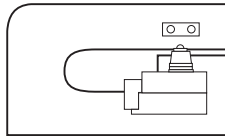
Switch Options



A LOW DIFFERENTIAL TRAVEL SWITCH

FITS DynaSwitch (DSW-2, DSW-4)

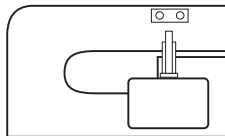
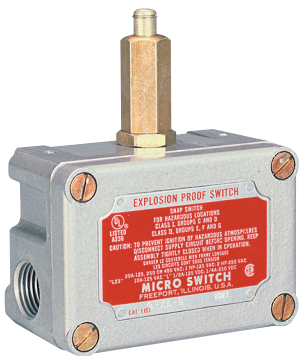
For use in controlled environment. Single pole, double throw. 5 amps at 125 or 250 VAC., 30 VDC. 12" leads included. Maximum 4 per unit. Operating temperature range: -65°F (-54°C) to 180°F (82°C)



B WEATHERPROOF LOW DIFFERENTIAL TRAVEL SWITCH

FITS DynaSwitch (DSW-3, DSW-5, DSW-6, DSW-7)

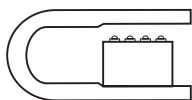
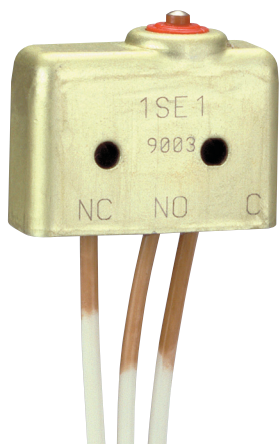
Has neoprene gasket around housing halves for tight seal. Includes elastomer seal boot around the actuator. Sealed conduit connectors. Die cast aluminum housing meets NEMA1 and 4 enclosures. Single pole, double throw, 0.002" travel. 15 amps, 125, 250, or 480 VAC. ¼ amp, 250 VDC. Maximum 4 per unit. Switch thread size: 14, 3½" threads minimum. Includes plastic cable strain relief. Operating temperature range: -25°F (-32°C) to 160°F (71°C).



C EXPLOSION-PROOF SWITCH

FITS DynaSwitch (DSW-3, DSW-5, DSW-6, DSW-7)

For use in hazardous locations (Class I, Div. I, groups C & D; Class II, groups E, F & G). Flame paths within the housing cool exploding gases below kindling temperature before they reach the explosive gases surrounding the housing. Single pole, double throw. Aluminum enclosure. (Not sealed against liquid.) UL and CSA listed. 20 amps, 125, 250, or 480 VAC, 250 VDC. Maximum 2 per unit. Includes plastic cable strain relief. Operating temperature range: -40°F (-40°C) to 160°F (71°C).



J WEATHERPROOF LOW DIFFERENTIAL TRAVEL SWITCH

FITS DynaSwitch (DSW-2, DSW-4)

Sealed for use in high environment situations. Single pole, double throw. 5 amps at 125, 250 VAC, 30 VDC. 12" leads included. Maximum 4 per unit. Operating temperature range: -65°F (-54°C) to 180°F (82°C)

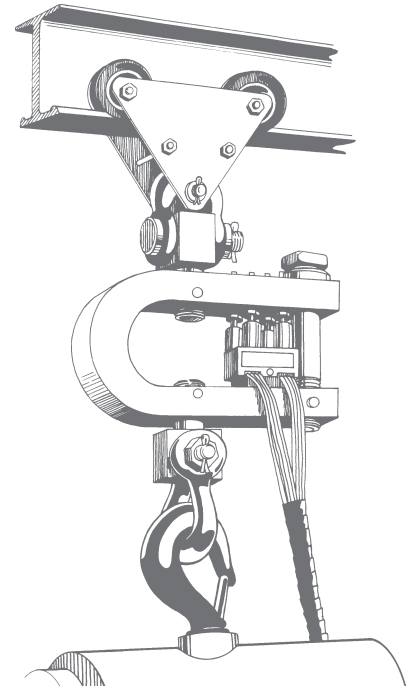
Applications & Ordering

FORCE CONTROL SWITCH APPLICATIONS

Force control switches are used to protect cranes, hoists and other lifting machinery against weight or force overload as well as slack load. They are also used to perform control functions in the case of DynaSwitch. There are no dial indicators associated with these devices, only switches which not only shut off power when an overload condition exists, but also operate lights, buzzers or klaxons to warn of an impending overload.

DynaSwitch

One site for installation of a DynaSwitch is at the dead end of a line. If this is not practical, the DynaSwitch may be used to support an equalizer sheave, or an entire hoist may be suspended from the DynaSwitch.



ORDERING INFORMATION

When ordering DynaSwitches:

1. Specify model number.
2. Specify switch option and quantity.
3. Specify fitting option desired on top of force beam.
4. Specify fitting option desired on bottom of force beam
5. Specify switch set point(s) if factory setting is desired.

Example: For a 10,000 lb range DynaSwitch with two weather proof switches, with lifting eye on top and shackle and adapter on bottom. Switch settings at 5000 and 7,000 lb (both ascending).

Use this shortened form to designate models and options:

“DSW-5-B2-F-G

Switch settings at 5000 lb (ascending) and 7000 lb (ascending).”

Ascending loads are most common and are assumed if not stated. Descending loads are most frequently used for slack-line detection.

AUTHORIZED DISTRIBUTORS

Ask the experts. Dillon distributors offer complete service capabilities from application assistance to sales and product support. Their experienced representatives are the most knowledgeable experts that you will find in the force measurement industry. We recommend that you consult these capable specialists for all of your measuring needs.

DILLON USA

1000 Armstrong Drive
Fairmont, MN 56031

Toll-Free: (800) 368-2031
Phone: (507) 238-8796
Fax: (507) 238-8258

www.dillon-force.com

DILLON UK

Foundry Lane, Smethwick,
West Midlands B66 2LP

Phone: +44 (0) 845 246 6717
Fax: +44 (0) 845 246 6718
Email: sales@dillon-force.co.uk

DILLON

Force Measurement Equipment

A division of Avery Weigh-Tronix, LLC

Dillon is part of Avery Weigh-Tronix. Avery Weigh-Tronix is a trademark of the Illinois Tool Works group of companies whose ultimate parent company is Illinois Tool Works Inc ("Illinois Tool Works"). Copyright © 2024 Illinois Tool Works. All rights reserved. This publication is issued to provide outline information only and may not be regarded as a representation relating to the products or services concerned. This publication was correct at the time of going to print, however Avery Weigh-Tronix reserves the right to alter without notice the specification, design, price or conditions of supply of any product or service at any time.